



HUDSON + ASSOCIATES  
ARCHITECTS  
130 WEST QUEENS WAY SUITE 201  
HARTFORD, VA. 22609  
(703) 722-1864

BROGDEN LANE  
ICE / MR HOME  
FOR HNN C5B

REV	DESCRIPTION	DATE
1		09/11/08

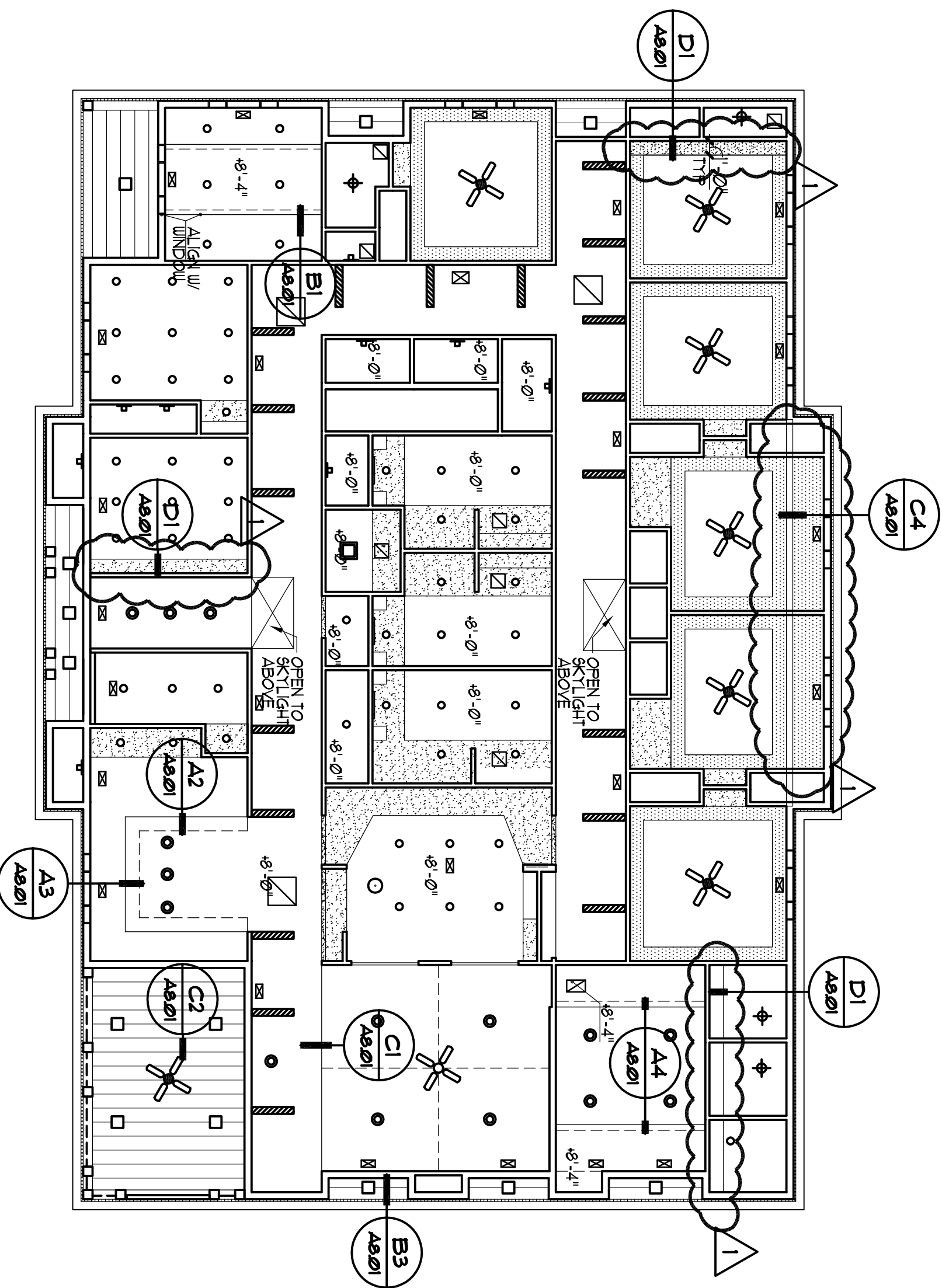
SEPTEMBER 03, 2008



CEILING PLAN

JOB NUMBER 0704

A8.01



REFLECTED CEILING PLAN  
SCALE: 1/8" = 1'-0"

CEILING NOTES

1. ALL CEILINGS ARE 9'-1" AFF. UNLESS NOTED OTHERWISE.  
2. COORD. CLG. PLAN W/ LIGHTING & MECHANICAL REQUIREMENTS.

LEGEND

X'-X'X"	HGT OF CLG. AFF.	X'-X'X'	CEILING HEIGHT AFF. HEADER OR SOFFIT HEIGHT AFF.
○	RECESSED CEILING LIGHT FIXTURE	▢	KEYLESS SURFACE MOUNTED LIGHT FIXTURE
●	RECESSED CEILING LIGHT FIXTURE	▣	3" FLUORESCENT LIGHT FIXTURE (SEE DETAIL A1/A801)
□	CLOSET LIGHT FIXTURE	▤	REVERSE BATTEN SOFFIT (BDS SEE DETAIL C2/A801)
□	90° RECESSED LIGHT FIXTURE	▥	REVERSE BATTEN SOFFIT (BDS SEE DETAIL C2/A801)
□	90° SURFACE MOUNTED LIGHT FIXTURE	▦	REVERSE BATTEN SOFFIT (BDS SEE DETAIL C2/A801)
◆	KEYLESS SURFACE MOUNTED LIGHT FIXTURE	▧	REVERSE BATTEN SOFFIT (BDS SEE DETAIL C2/A801